

Collection



Residual Waste

Waste that cannot be recycled

Examples:

- Vacuum cleaner bags, floor sweepings
- Cigarettes
- Nappies, tissue paper
- Soiled garments
- Wallpaper
- Pet litter

Not to be used for:

- Electrical items
- Batteries (rechargeable and non-rechargeable)
- Building rubble; any bulky items
- Packaging materials



In the unlikely event that the container is not large enough, bags for residual waste can be purchased from all large recycling depots. Simply place them next to the container in time for the next collection. Refuse collection dates are published on the online waste collection calendar and in the waste app; you can also enquire with the AWB customer service.

Collection



Organic Waste

Kitchen and edible waste (raw and cooked)

Examples:

- Leftover fruit and vegetables
- Leftover meat and fish
- Nut shells, eggshells
- Coffee grounds, coffee and tea filters
- (Spoiled) bakery items
- Cut flowers, pot plants

Not to be used for:

- Plastic bags, other packaging materials
- Milk or drink cartons
- Wallpaper
- Tissue paper
- Animal litter



All households who do not compost their own organic waste must participate in the organic waste collection.

Collection



Waste Paper

Paper, card, and cardboard packaging

Examples:

- Newspapers, catalogues
- Books without covers
- Exercise books, office paper
- Envelopes
- Paper packaging
- Card and cardboard packaging

Not to be used for:

- Milk or drink cartons
- Wallpaper
- Tissue paper, nappies
- Soiled paper or cardboard packaging



Ordering a paper bin is voluntary and free of charge. The lid must close after filling. Paper can also be handed in at the small and large recycling centres.

Offensive for the Environment



Information about Waste Separation in the District of Fürstenfeldbruck

English



AWB

Abfallwirtschaftsbetrieb des Landkreises Fürstenfeldbruck

www.awb-ffb.de

Bring Your Own Refuse



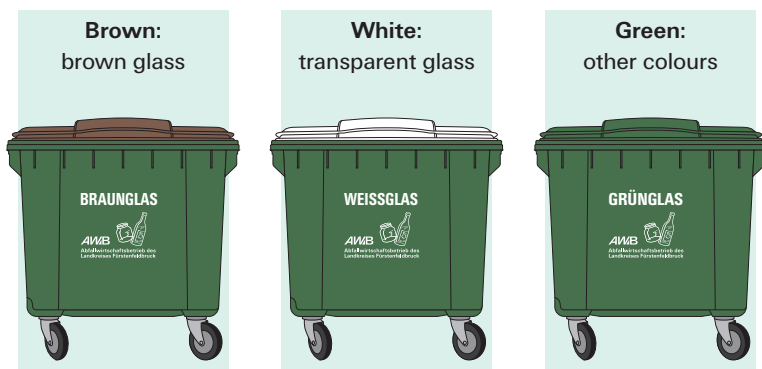
Small Recycling Centres

What you can bring here:

- Paper and cardboard packaging
- Glass (white, green or brown)
- Cans

➔ Cardboard packaging must be cut into small pieces.

➔ Sort the glass by colour; the colour is denoted by the container lids.



Opening times:

Mon-Sat: 7 am – 7 pm / Closed on Sundays and holidays
Please do not deposit recycling waste outside opening hours.

The disposal of residual refuse, organic waste or bulky waste items, etc. is prohibited and is punishable by fine.

Bring Your Own Refuse



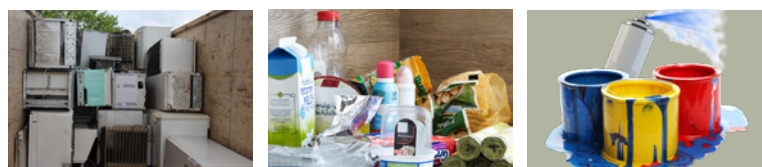
Large Recycling Centres

What you can bring here:

- Paper, glass and cans
- All recycling materials
- Bulky waste, electrical items, building rubble
- Garden waste, etc.

➔ Only normal household quantities accepted.

➔ A fee may be charged for certain items.



Plastic packaging (e.g. beakers, films, PET bottles), drink cartons and aluminium

➔ Please separate according to packaging type

Problem waste, cooling devices/refrigerators and porous concrete can only be accepted at certain locations. **Mobile collection points** are also available for problem waste and light packaging items.

Opening times:

Opening times vary between sites.

Large quantities of flammable waste and building rubble can be disposed of at the Jesenwang building waste dump or the Geiselbullach cogeneration plant for a fee.

Bring Your Own Refuse



Other facilities

In addition to the large recycling centres, garden waste can also be disposed of at individual **garden waste collection points**, while packaging materials can be deposited at **plastic collection points**.

Second-hand goods

On certain days, second-items in good condition can be delivered to the **recycled item market in Fürstenfeldbruck**, where they are also sold at low prices.



Opening times for acceptance of items

Tuesday:	08.00 am – 12.00 noon		2.00 pm – 6.00 pm
Thursday:	08.00 am – 12.00 noon		2.00 pm – 7.00 pm
Saturday:	08.00 am – 14.00 pm		

Opening times for the sale of items

Wednesday:	2.00 pm – 6.00 pm
Friday:	2.00 pm – 6.00 pm

The following items are accepted and offered for sale: furniture, crockery and other household items, books, toys & games, sports equipment, textiles and electrical equipment. Proceeds from the sale of items benefit waste collection charges.

Collection



Collection of bulky items

Upon request, we can collect bulky items from your home for a transportation charge (maximum 2 cubic metres per household).

Further information is available from our website or from the waste advice service.

Customer service	(0 81 41) 5 19 - 5 19
Waste advice service	(0 81 41) 5 19 - 5 16
E-Mail	info@awb-ffb.de
Website	www.awb-ffb.de

Adress:

Abfallwirtschaftsbetrieb des Landkreises Fürstenfeldbruck (AWB)
Münchner Str. 33, 82256 Fürstenfeldbruck

Herausgeber:

AWB Abfallwirtschaftsbetrieb des Landkreises Fürstenfeldbruck
Münchner Straße 33, 82256 Fürstenfeldbruck
1st edition 05/2023
Dieses Faltblatt wurde auf 100% Recyclingpapier gedruckt.